

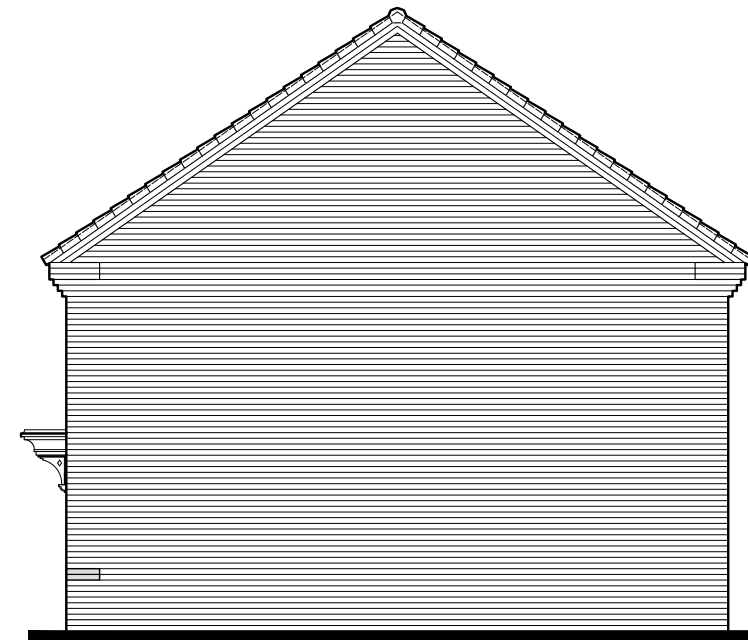
Scale 1:100
Issue 5.0



M2B4P
FRONT ELEVATION

M2B4PMT-1

M2B4P-1



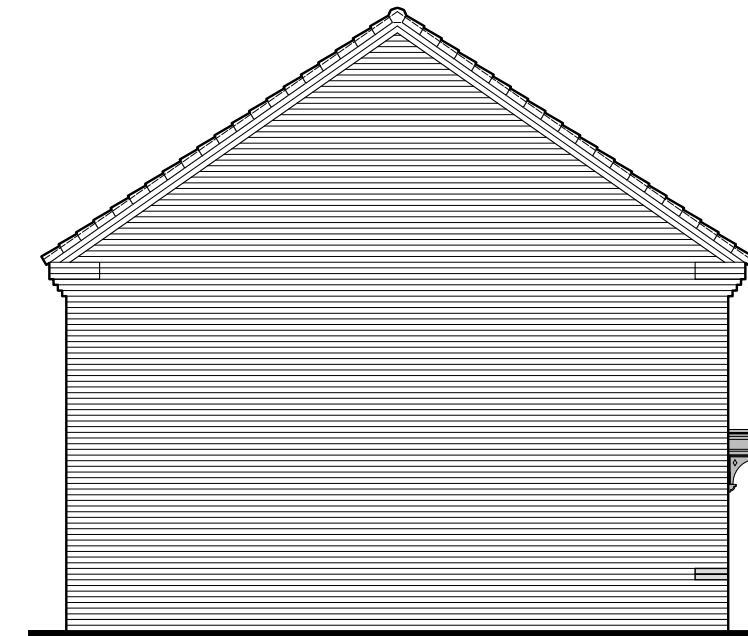
M2B4P-1
SIDE ELEVATION



M2B4P-1
REAR ELEVATION

M2B4PMT-1

M2B4P



M2B4P
SIDE ELEVATION

Sedley
BRICK
M860.PL-01

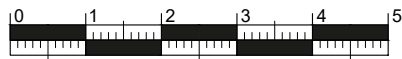
DATE: MAY 2021
SCALE: 1:100 @ A3

REV:

DRAWN: DR
CHECKED: GPM

74.14m²
798m²

BLOOR HOMES



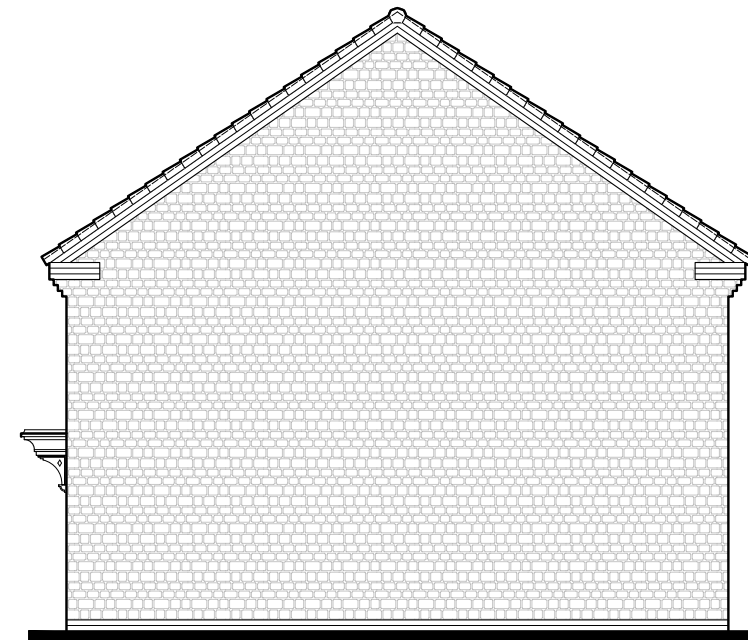
Scale 1:100
Issue 5.0



M2B4P
FRONT ELEVATION

M2B4PMT-1

M2B4P-1



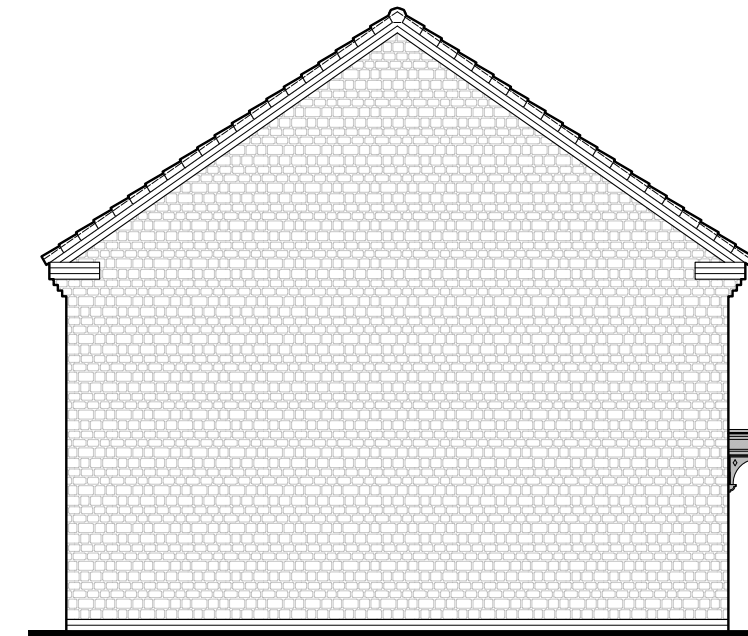
M2B4P-1
SIDE ELEVATION



M2B4P-1
REAR ELEVATION

M2B4PMT-1

M2B4P



M2B4P
SIDE ELEVATION

Sedley
STONE
M860.PL-02

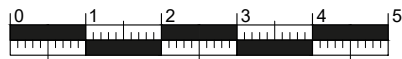
DATE: MAY 2021
SCALE: 1:100 @ A3

REV:

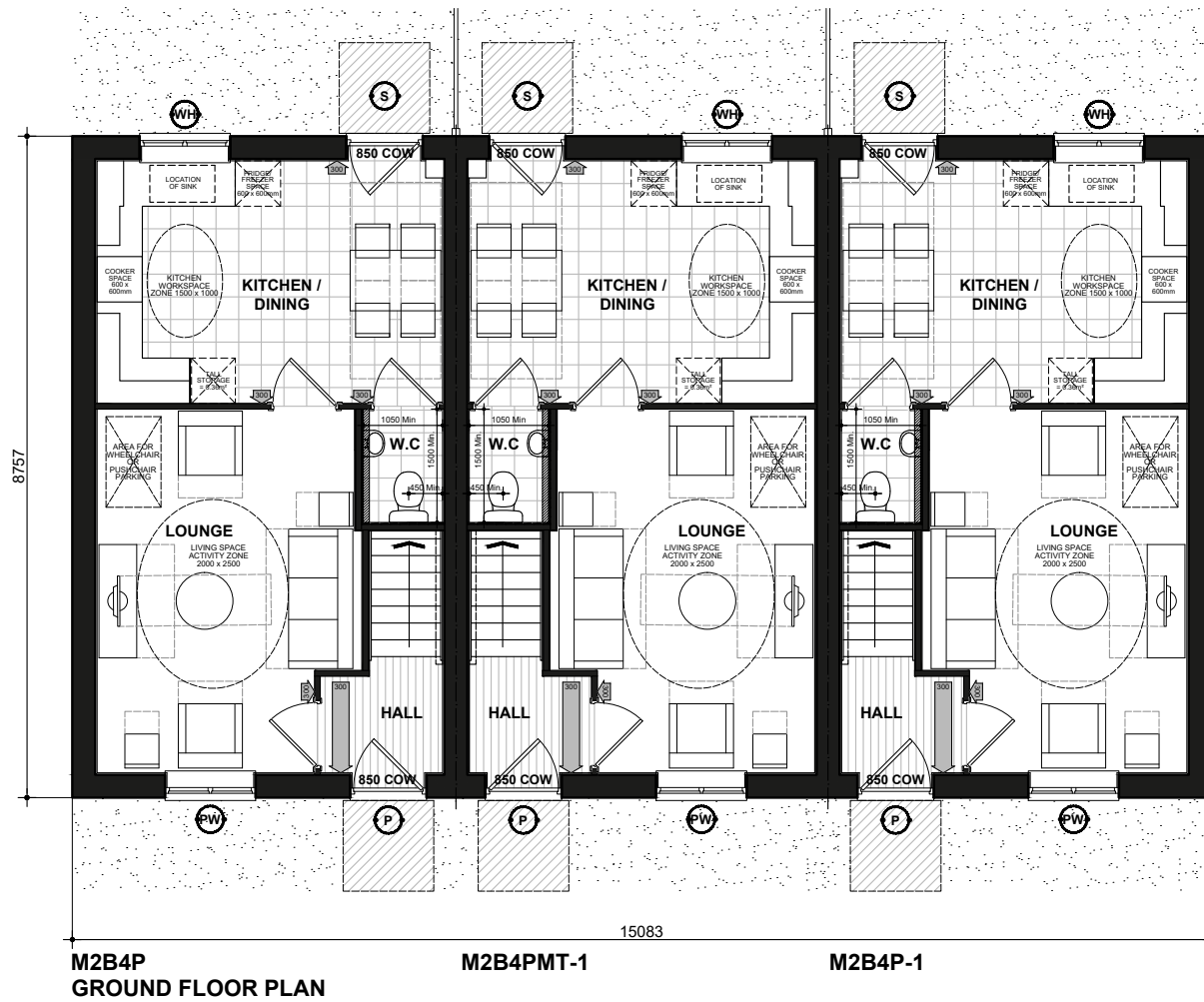
DRAWN: DR
CHECKED: GPM

74.14m²
798m²

BLOOR HOMES



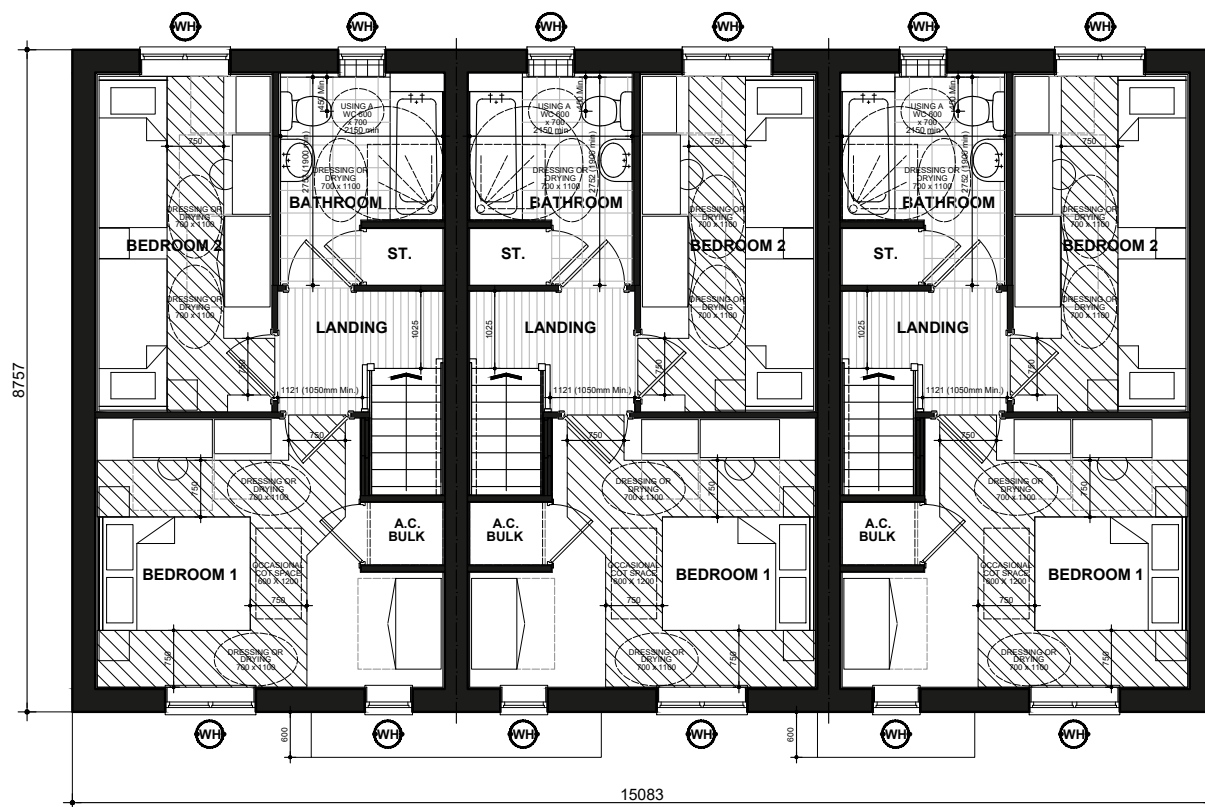
Scale 1:100
Issue 5.0



M2B4P
GROUND FLOOR PLAN

M2B4PMT-1

M2B4P-1



M2B4P
FIRST FLOOR PLAN

M2B4PMT-1

M2B4P-1

- RAMPED APPROACH TO COMPLY WITH PROVISIONS A. TO G. OF PARAGRAPH 2.10 M.
- (P)** (DENOTES : PRINCIPLE PRIVATE ENTRANCE NOMINATED AS STEP FREE ACCESS. ENTRANCE DOOR TO COMPLY WITH PROVISIONS A - I OF PARAGRAPH 2.20 PART M4(2) PRIVATE ENTRANCES. WITH A LEVEL EXTERNAL LANDING MIN. WIDTH/DEPTH OF 1200MM. FULLY DIFFUSED AUTOMATED LIGHTING TO BE PROVIDED TO ENTRANCE.)
- (S)** (DENOTES : EXTERNAL DOOR TO HAVE STEP FREE APPROACH AND AN ACCESSIBLE THRESHOLD AND LEVEL EXTERNAL LANDING MIN. WIDTH / DEPTH OF 1200MM.)
- 850 COW** DENOTES : ENTRANCE DOORS TO HAVE 850mm CLEAR OPENING WIDTH. IN ACCORDANCE WITH PART M4 (2) DIAGRAM 2.2
- NOTE :** PLEASE REFER TO SITE LAYOUT FOR AN ALTERNATIVE PRIVATE ENTRANCE WHERE A STEP FREE ACCESS CANNOT BE ACHIEVED TO THE PRINCIPLE PRIVATE ENTRANCE.
- LEVEL EXTERNAL LANDING IS COVERED BY PORCH. MIN. WIDTH OF 900mm AND DEPTH OF 600mm FULLY DIFFUSED AUTOMATED LIGHTING TO BE PROVIDED TO ENTRANCE
- (NIB)** DENOTES : 300mm NIB IS PROVIDED TO THE LEADING EDGE OF ALL DOORS ON THE ENTRANCE STOREY.
- (NIB)** DENOTES : PRINCIPLE PRIVATE ENTRANCE A 300mm NIB IS PROVIDED TO THE LEADING EDGE AND THE EXTRA WIDTH MAINTAINED 1200mm BEYOND IT.
- 1200mm MIN. CLEAR SPACE IN FRONT OF AND BETWEEN ALL KITCHEN UNITS & APPLIANCES.
- (PW)** (DENOTES : PRINCIPLE LIVING SPACE. GLAZED DOOR OR WINDOW CILL TO START MAX. 850MM AFFL. HANDLE OF 1NO. MIN. WINDOW IN PRINCIPLE LIVING AREA BETWEEN 450MM - 1200MM AFFL. UNLESS FITTED WITH REMOTE OPENING DEVICE WITHIN THIS HEIGHT RANGE.)
- (WH)** (DENOTES : ALL OTHER WINDOWS TO HAVE HANDLES LOCATED BETWEEN 450MM-1400MM AFFL. UNLESS FITTED WITH A REMOTE OPENING DEVICE THAT IS FITTED WITHIN THIS HEIGHT RANGE.)

- BOILER TIMER CONTROLS & THERMOSTATS SHOULD BE EITHER:
 - MOUNTED BETWEEN 900MM AND 1200MM ABOVE FINISHED FLOOR LEVEL ON THE BOILER, or
 - HAVE SEPARATE CONTROLLERS (WIRED or WIRELESS) MOUNTED ELSEWHERE IN AN ACCESSIBLE LOCATION WITHIN THE SAME HEIGHT RANGE
- ALL WALLS, DUCTS AND BOXINGS TO THE WC/CLOAKROOM, BATHROOM AND SHOWER ROOM SHOULD BE STRONG ENOUGH TO SUPPORT GRAB RAILS, SEATS AND OTHER ADAPTATIONS THAT COULD IMPOSE A LOAD OF UP TO 1.5kN/m²
- ACCESSIBLE BATHROOM WITH WC/BASIN/BATH ON THE SAME FLOOR AS THE PRINCIPLE DOUBLE BEDROOM.
- BED REFERENCES:**
 KSB - KING SIZE BED 1500 X 2000
 DB - DOUBLE BED 1900 X 1350
 SB - SINGLE BED 900 X 1900
- DOUBLE BEDROOM (PRINCIPLE) TO HAVE 750mm CLEAR ACCESS ZONE TO BOTH SIDES AND FOOT OF BED.
- SINGLE OR TWIN BEDROOM TO HAVE 750mm CLEAR ACCESS ZONE TO ONE SIDE OF BED.

Sedley
FLOOR PLANS
M860.PL-03

DATE: MAY 2021 REV:
SCALE: 1:100 @ A3

DRAWN: DR 74.14m²
CHECKED: GPM 798m²

BLOOR HOMES