



Projects in progress & in contract

Orwell

Alpha & Common Road, Gorleston-on-Sea



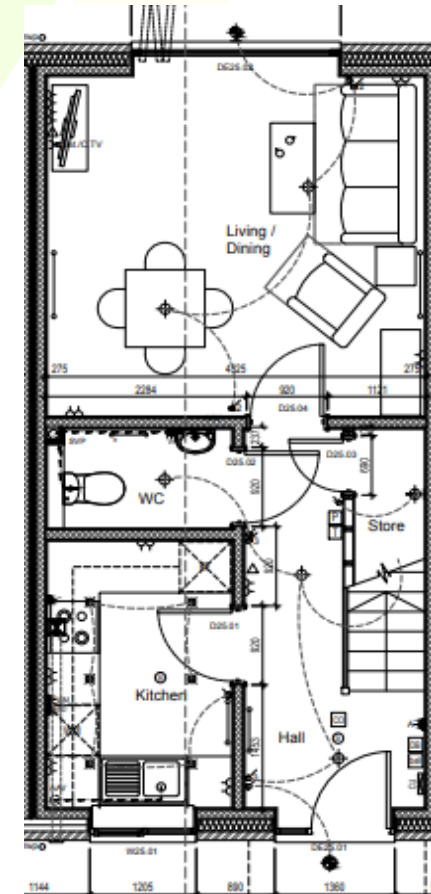
We are working with C&A Builders Ltd to complete 8 properties in Gorleston-on-Sea. They are all affordable and are 2-bedroom. This development is built in on land which was derelict and will hopefully create a sense of security to the community as well as provide more affordable housing in the area.

Completion in late October 2024.

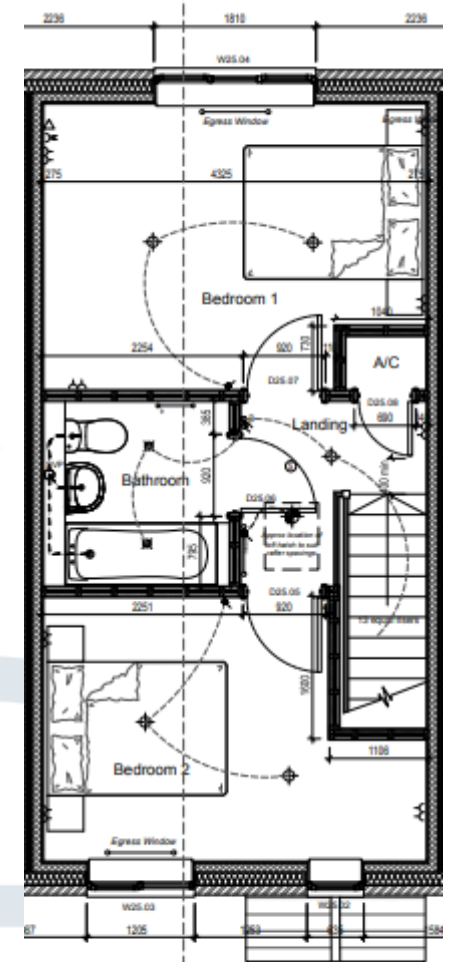
Fullers Field, Westerfield – S106

As part of S106, we are working with Harrison and Wilden Ltd to complete 1 property in a beautiful village of Westerfield. The development consists of 1 property which will be for affordable rent, and we look forward to see more progress!

**Completion in
January 2024.**



Plot 25
Proposed Ground Floor Plan
(2 bed house)
Total GIFA = 72.42 sqm [779 sqft]



Plot 25
Proposed First Floor Plan
(2 bed house)

Admirals Green, Great Bentley – S106



We have had the opportunity to work with Hills Residentially Ltd to complete 8 affordable properties in Great Bentley. They are all 2-bedroom properties, 6 of them will be for affordable rent and 2 of them will be for shared ownership.

Completion in January 2025.

Mow Hill, Witnesham – S106

We are working with Denbury Homes Ltd on more S106 properties in Witnesham. We are expecting to handover 5 affordable rent properties and 2 shared ownership properties in **December 2024**. Affordable rent properties include a mix of 1 and 2-bedroom houses and shared ownership properties will be 3-bedroom houses.

Lupin Road, Ipswich



We have another land-led project, which is only 5 minutes away from CHL! This is based at Lupin Road, Ipswich where we are working with Needhams Contractors Ltd to bring 7 affordable rent properties to Ipswich.

Completion in March 2025.

Conger Phase 6



Protecting kitchen cupboards at all cost!

This is another one of our refurbishment projects with East Rising Ltd at Herivan Gardens, Oulton Broad, where we are uplifting 1 bungalow to provide a future home for individuals who are over 55. As this project only consists of 1 property, the programme is only 6 weeks!

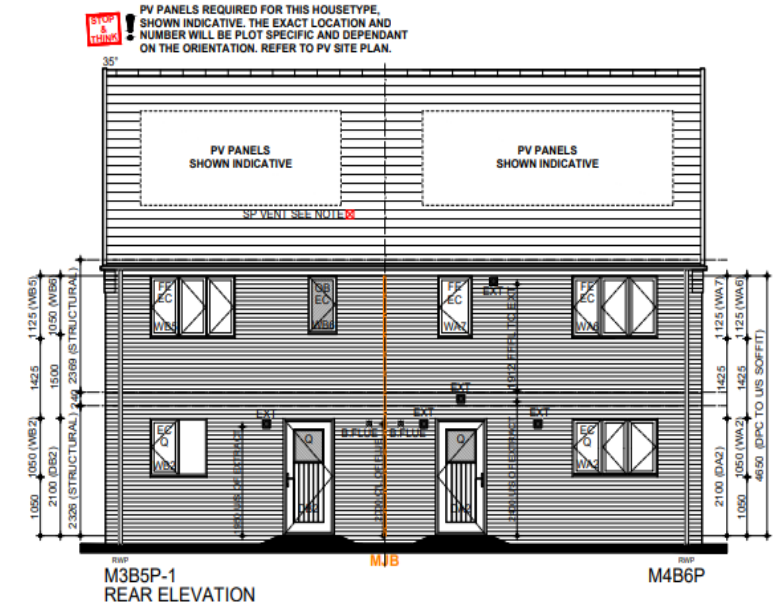
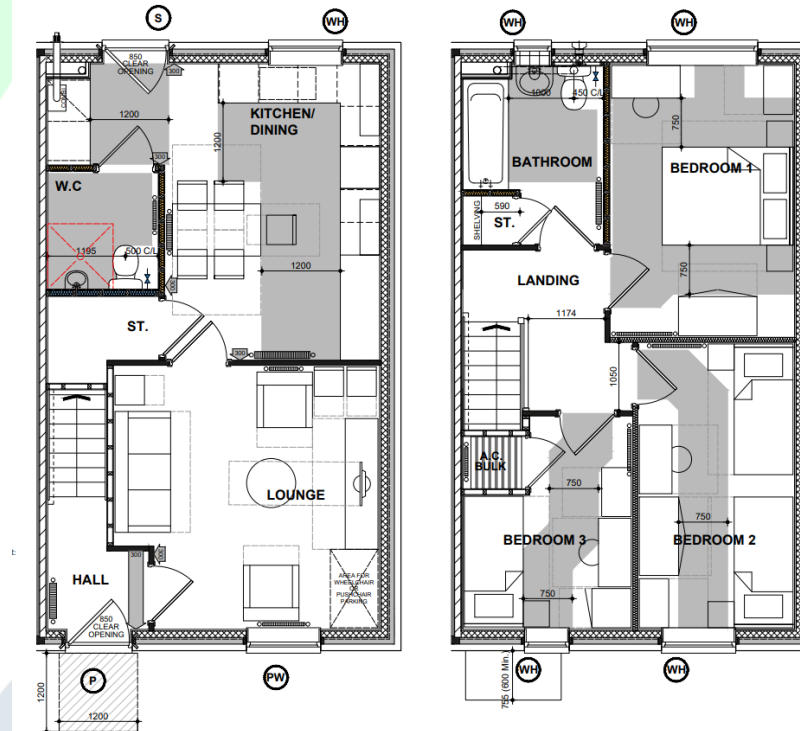
Completion in early October 2024.

Fressingfield – S106

This is another project of our S106's, where we are working with Rear Construction Ltd to complete 9 properties in Fressingfield. The project consists of 7 affordable rent properties and 2 shared ownership properties. 7 of the affordable rent properties are 1-bedroom flats, 2-bedroom semi-detached houses and 1 3-bedroom detached house. Whilst the remaining 2 plots which are shared ownership are 2-bedroom semi-detached houses.

Completion date TBC, predicted to be in 2025.

High Street, Walton Bloor – S106



One of our bigger S106 projects which we've had and as some of you may already know about, is our project at Felixstowe with Bloor Homes Ltd. We have the last remaining plots in the making, which are 2 affordable rent and 1 shared ownership. With 1, 3-bedroom and 4-bedroom affordable rent properties and 1 shared ownership property.

Once these properties are completed, we will have a total of 59 properties on this site.

Completion in May/June 2025.

Lodge Road, Holton



After a sudden stop in construction on this site due to contractors' insolvency, the site is now back and running with Seamans Building Ltd. This development consists of 15 properties in total, with 10 properties for open market, 3 for affordable rent and 2 for shared ownership.

Completion in August 2025.